

## All About [insert name of provider/activity here]

We are looking forward to meeting you when you come to [name of activity]. Below is some more information about us and what we do so you can have a better idea of what [name of activity] will look like on the day.

### **Who are we?**

You will meet some of these adults when you come along:  
(Space for names and photos)



### **Where are we?**

This is where we will be for our activity session.



*Front entrance*

### **Accessibility Information**

Please include accessibility information for the activity site such as:

- Disabled parking
- Ramp access
- Disabled toilets
- Quiet space/sensory area
- Anything else that may be relevant to your activity and its location.

**What will we be doing?**

Below is an outline of what our day will look like:

Time	Activity
e.g. 9:00am	Welcome and morning snack
9:30am	Arts and Crafts with Joanie

**If we have to change anything, we will let you know at the start of the day.**

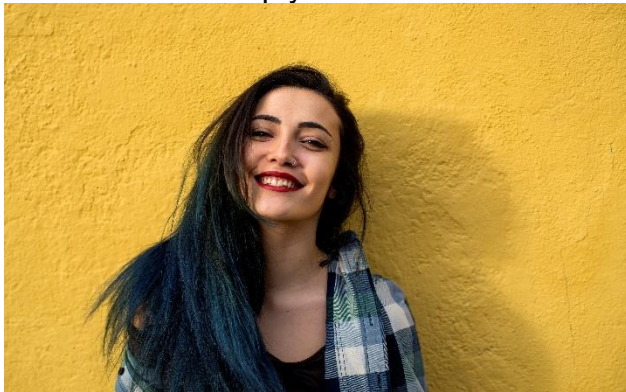
If you still have any questions about the activity, you can contact us by using the details below:

Email:

Telephone:

Social Media:

If you have any questions or worries during the day, (name of designated person) will be there to help you.



Now you know who we are we would love to get to know you better. If you would find it helpful, you can fill out the 'All About Me' form in the link below. This will let us know how best to welcome you on the day:

<http://forms.gloucestershire.gov.uk/AllAboutMe>

We look forward to meeting you in person and having fun!



Department  
for Education



Gloucestershire  
COUNTY COUNCIL

